

**NHTOI**

**1000**

**HKRUNLAM**

**3**

**HkumHkrang hte  
makau grup yin san  
seng ai lam**

# Nhtoi 1000 hkrunlam maumwi mabyin ngu ai gaw hpa rai ta?

Nhtoi 1000 hkrunlam ngu ai gaw Kanbau jawng hte malu masha shalaw shalam gumhpraw hpung (LIFT) kaw nna madi shadaw da ai masing ni hta rawng ai akyu hkam sha lu ai mare kahtawng kata na shawa masha yawng a matu hkyen lajang da ai, galam mai ai sumla pa maumwi mabyin langai re. Ndai maumwi mabyin hta daw 2 lawm nna, lu sha n-gun hte seng ai lam madung ni a lam bawngban ai lam hpe myit sharawt ya na matu hte hpaji jaw na matu yaw shada ai. Hkum sha ngu nna pat hkum da ai htunghkying makam ni, masha kaba ni kaw nna ayan na, na ga ai (galoi mung n-jaw ai) shiga ni, ma Kanu lu sha n-gun, ma hkyeng hkalung hte ma kaji ni hpe malu masha jaw sha ai ladat ndai zawn re ai ni hpe nhtoi 1000 hkrunlam gaw shapraw madun dan da ai.

Nhtoi 1000 hkrunlam gaw madi shadaw ai wa kaw nna, shawa masha uhpung langai hpe shadan shapraw madun dan ai sumla hte rau madun ai maumwi mabyin langai re. Madat ai shawa masha kaw num la yawng, asak kaji kaba yawng mai shang lawm ai. Madat ai ni hpe maumwi mabyin ka-ang hta kalang, jahtum hta kalang madi shadaw ya ai wa kaw nna gasan n kau san ra ai.

Dai gasan ni gaw nhtoi 1000 hkrun lam hta lawm ai lam ni a lam hpe, bawng ban hpawng langai hta sa du madat ai shawa masha

ni a lapran hta sha-byin sha-ngun ai. Bawngban na matu gasan ni naw san mayu ai rai yang myit ra ai hku jai lang lu na matu gasan nkau ni hpe maumwi mabyin tsun wa ai dingyang hta kahtap bang da, madun da ai. Lama na aten nlu ai rai yang, kahtap bang da ai gasan ni hpe shalai kau mai ai. Bawngban hpawng hpe madi shadaw ya ai wa kaw nna hkang mat lu na matu karum kahtau byin sha-ngun na “shiga madung” ngu ai daw mung ndai laika buk hta rawng ai.

Marai 20 hta n-jan ai shawa masha hpawng hpe madi shadaw ya ai wa kaw nna, maumwi mabyin hpe shawng nnan hti dan ra ai. Bawngban na matu gasan ni san sa na rai yang, madat ai ni hpe marai 4-5 hpra uhpung kaji ni garan hpawng da ra ai. Uhpung kaji ni garan hpawng kau ai a marang e, hku hkau ganawn mazum ai lam, shang lawt ai lam hte, a-manu sha re ai makau grup yin langai hpe byin sha-ngu na re.

Maumwi mabyin gaw n-galu ai rai tim, bawngban na matu aten law law lu na matu ahkyak ai. Maumwi mabyin hpe hti dan, bawngban na matu aten hkying hkum 1 ngu nna masat mai ai. Lama na hkying hkum 1 lai mat tim, maumwi mabyin daw mi sha naw ngut ai rai yang, karum madi shadaw ya ai wa hku nna tsun dan bawngban nga ai daw hpe ngut hkra galaw kau nna, ngam nga ai maumwi mabyin hpe sha-ngut na matu, madat ai shawa masha ni hpe hpang kalang bai sa wa na matu aten bai jahtuk la mai ai. Maumwi mabyin hpe bawngban ai shaloi, masha hpawng langai hte langai lanyen ai lam, langai lawan ai lam ni n-bung ai. Dai majaw maumwi mabyin ngut ai du hkra, madat ai ni hte hkum ra na a-lang mung amyu myu shai chye ai.



## Yaw shada ai lam

Nhtoi 1000 hkruklam hpe ka ai a yaw shada lam gaw,

- Nhtoi 1000 hkruklam hpe ka ai a yaw shada lam gaw,
- Kanu hte ma a lusha n-gun hte seng nna, mare buga hta nga ai mung shawa masha ni nchye shi ai lam ni hpe jahpring ya na matu
- Maren buga kata hta nga ai ni yawng hpe asak pang num la n-garan ai sha, lusha n-gun hte seng ai tinang a mayak ni, myit tsang ai lam ni hpe shadan shapraw tsun sha-ngun nna, tinang hte asak pang bung ai ni hte rau bawngban tsun jahta ai lam hpe n-gun jaw na matu
- Karum kahtau ra wa yang, gaga masha kaw nna shiga ni, hpaji jaw ai lam ni hpe kahtap tam yu na matu shada da mat sun ya ai lam hpe n-gun jaw na matu rai nga ai.

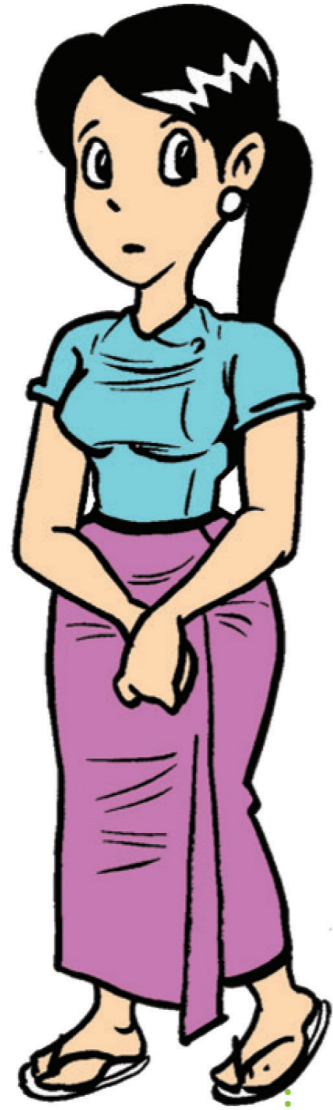
## Madi shadaw ya ai wa a daw

Madi shadaw ya ai wa gaw gasan ni hpe lam matsun hku jai lang let, shawa masha ni a lapran hta bawngban ai lam byin pru na matu karum ya ra ai. Shawa masha hpe ga shaga na ahkang jaw na matu, madi shadaw ai wa gaw ga kachyi myi sha shaga ra ai. Shawa masha ni kaw nna tinang a ningmu, gasan ni, myit tsang ai lam ni hpe tsun shapraw dan na matu kanung taw ai rai yang,

kahtap jaw da ai gasan ni hpe san ra ai.

Mare buga masha ni hte hkruklam nna nhtoi 1000 hkruklam hpe tsun dan shagu, madi shadaw ai ni hkan nang hkan sa na matu hpaji jaw ai lam nkau hpe madun da ai.

- Mare bunga masha ni gaw tinang a dinghkrai hkap la ai lam ni hpe teng man ai hku hte wanglu wang lang tsun jahta gwi na, grai wa n-hkyik ra ai, makau grup yin langai hpe gin shalat u.
- Yawng a ningmu hpe hkungga lara di u.
- Mare buga masha ni tsun ai hta shut ai lam nga ai rai tim pyi, dingdun dawdan ai lam hkum galaw.
- Asan sha re ai lam matsun ai lam ni hpe jaw let, mare buga masha ni hku nna tinang hpa galaw ra na re hpe hkrak asan sha chyena na lam hpe shateng u.
- Tsun dan mat wa ai lam ni hpe nchye na ai rai yang gasan san na matu (sh) kahtap nna sanglang dan na matu hpyi shawn ai lam ni galaw hkra n-gun jaw lajin u.
- Uhpung kaji kaba hta hkan nna, masha yawng a-manu sha, dung lu na matu hkrak ram ai dam lada ai shara nga u ga.
- Mare buga masha ni gaw tinang madat taw ai maumwi ma byin hpe myit shang sha nga na matu, maumwi mabyin hpe apyaw sha rai nna, myit rawt ai hku hti dan u.
- Bawngban tsun jahta na matu aten law hkra jaw u. Maumwi hpe hti bawngban yu nga ai dingyang hta daw langai hpe bawngban ngut ai hte gaga daw de matut sa u.



Ma San Htwe



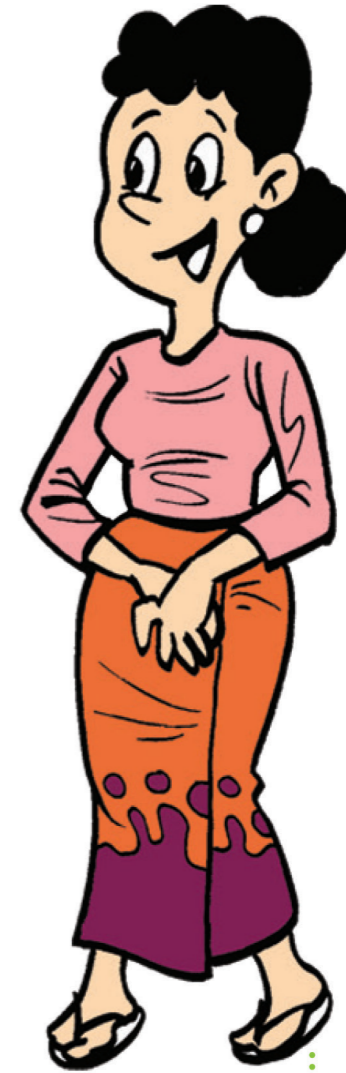
Ko Ta Htoo



Daw Taung Chyi



Ko Awng Myit  
(Hkai sun sara)



Ma Tuza (Ko Awng Myit a  
madu jan)

Daw –3

# Hkumhkrang hte makau grup yin san seng ai lam

Yaw shada lam

Ahkyak ai aten 5 (namdum sa ngut ai ten, maza mala hpe jum ngut ai hpang, lu sha nsha shi yang, ma hpe lu sha n-jaw sha shi yang, lu sha n-hkyen shi yang) lata hpe sabya hte kashin na matu hte ma kan atsawm sa na matu ahkyak ai lam hpe machye machyang sharawt ya na matu.

Shirin ai lam hta karum ai arai ni (teaching aids)

- Maumwi mabyin laika buk
- Laika maisau pa gaman
- Nsam hke dan ni



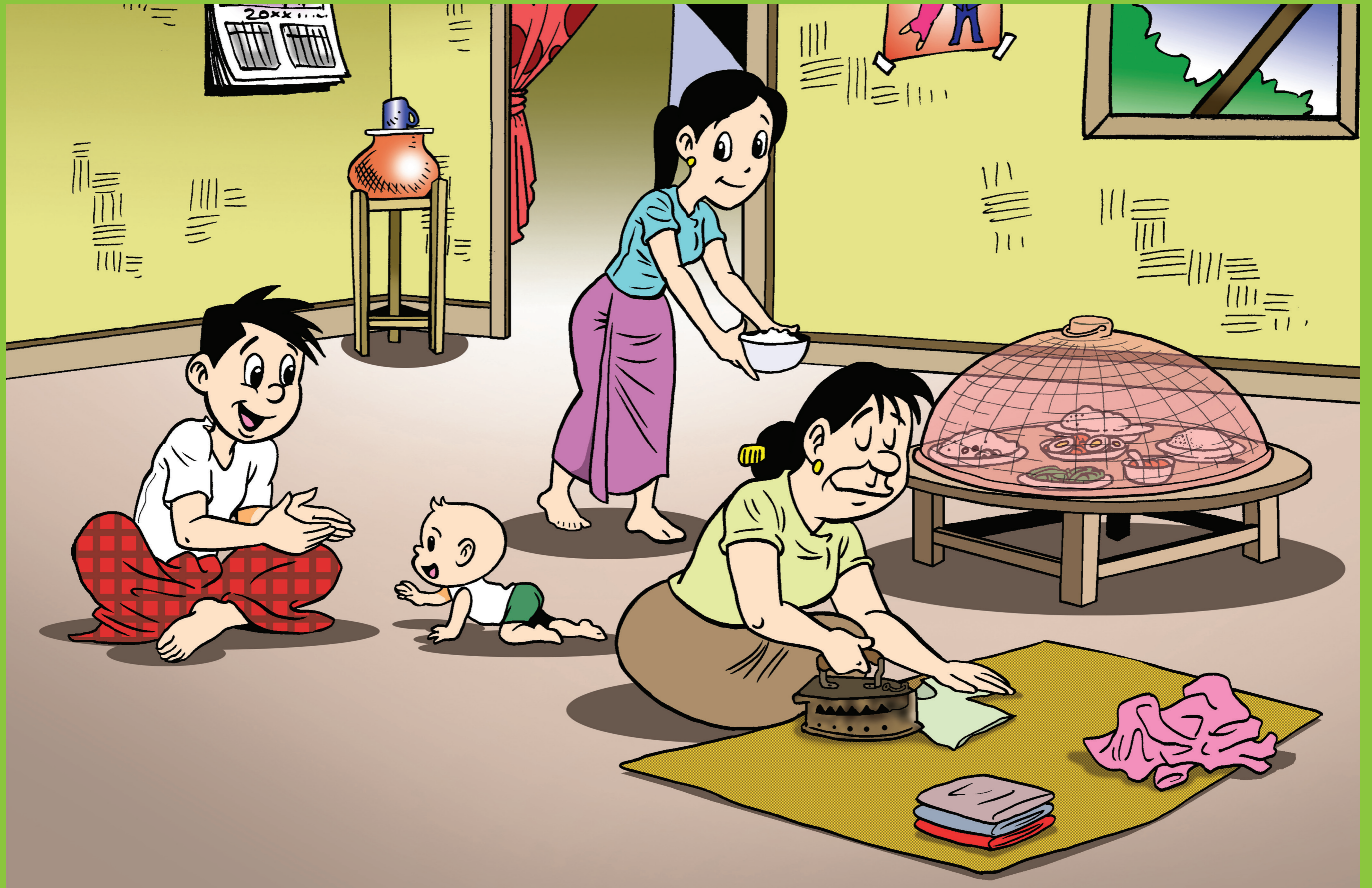
Maumwi mabyin a hpang jahtum hta shiga madung daw nga ai. Ndai shiga madung ni hpe hkrak chyechap nga na matu hkyen da nna, bawngban nga ai laman htap htuk ai aten shagu hta tsundan garan kachyen ya u. Shiga madung ni gaw bawngban taw nga ai laman hta byin pru wa chye ai shut taw ai myit sumru ningmu ni hte shiga lamyi ni hpe sharai shading ya ai shaloi, nang hpe karum ya na ra ai.

Matsun ai lam

Madat ai ni hpe ndai hku sanglang dan u.

1. Nhtoi 1000 hkrunlam ngu ai maumwi mabyin langai hpe hti dan na re.
2. Na na aten hpe shana da u. (Maram yu yang, hkying hkum 1 ram na na rai tim, rau ai ten hta hkan nna aten hpe shayawm/ shajat ai lam galaw mai ai.)
3. Maumwi mabyin hpe hti dan taw ai shaloi, bawngban na ga san nkau hpe san na re.
4. Bawngban ai lam ni hpe uhpung kaji ni hte (sh) madat ai ni yawng hte galaw mat na re.
5. Ahkyak ai lam lama ma byin pru wa nna, atsawm sha bawngban na matu ra wa ai rai yang, madi shadaw ai wa gaw laika pa hta ka matsing da ra ai. Dai rai yang she, maumwi mabyin ngut mat ai shaloi, bai bawngban lu na re.





# 1

## Maumwi mabyin

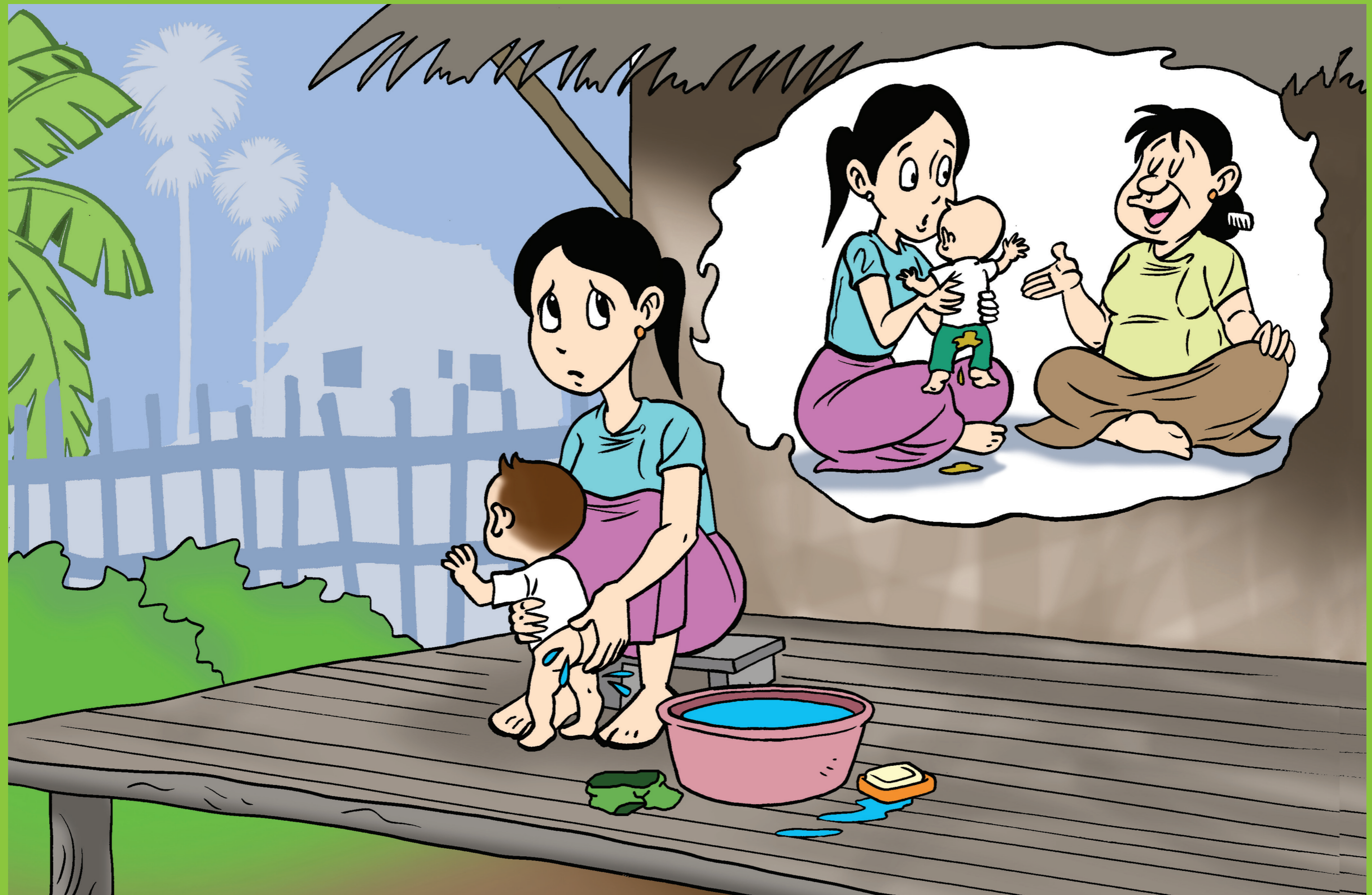
---

Ya nga yang, Hpo Long asak 1 ning myi rai sai. Rawt tsap chye nna, nta masha ni a lusha ni hpe mung sha hpang taw sai. Ko Ta Htoo hte Ma San Htwe gaw myi npu e sha shan yan a kasha la kasha a lawan sha kaba bawngring wa ai hpe mu nna, tinang a myi hpe tinang pyi n-kam byin taw nga ma ai. Daw Taung Chyi chyawm gaw tsawra na zawn san ai tinang a kashu a matu lu sha shadu ya dat, kashu hpe shat jaw sha dat, hkyaw ginsup dat, hpun palawn ni hkrut ya dat hte shi a aten ni hpe pyaw pyaw jai lang nga ai.



Maumwi mabyin hpe nsen ja ja hti u.







## 2

### Maumwi mabyin

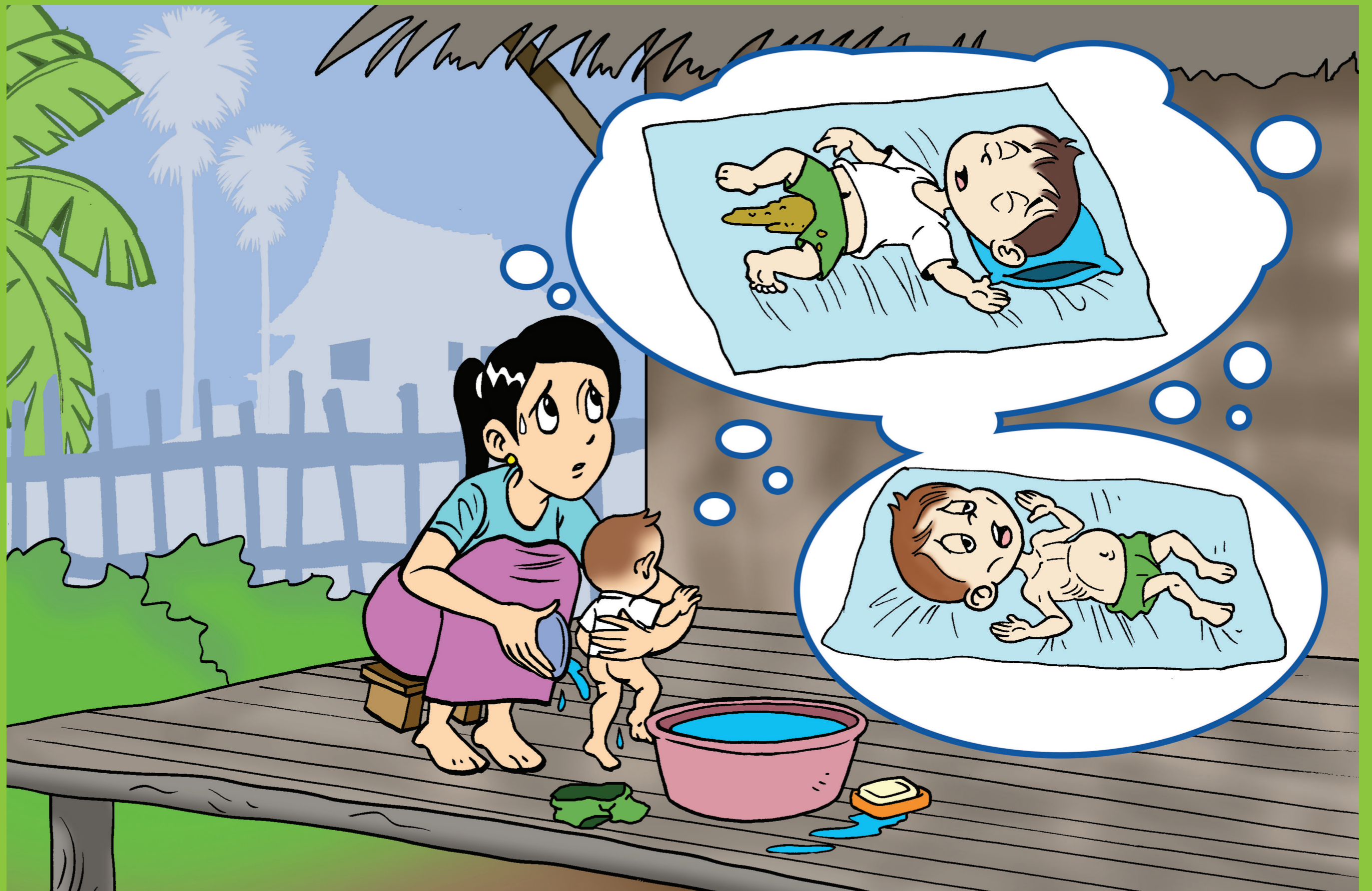
---

Hpo Long shata myi kalang, lahkawng lang ram kan mase taw ai hpe Ma San Htwe mu hkrup ai. Daw Taung Chyi chyawm gaw ndai gaw ayan na byin chye ai hpan re sha ngu nna tsun ai. Mare buga kata na masha ni mung dai hku sha tsun ma ai. Ma ni gaw kaba wa ai shaloi, hkum gawng byin nga masa galai yang, gashadawn nda kren galeng ai kaw nna dagup yang, dagup ai kaw nna dung hpang wa yang, dung ai kaw nna rawt tsap wa yang kan mase chye ai ngu nna Daw Taung Chyi gaw tsun ai.

### Myit ra ai hku lata mai ai jat bang da ai gasan ni.

---

- Na mare buga kata hta ma ni jahkring hkring kan mase ai kun? Hpa majaw kan mase ai ngu shadu ai rai?



# 3

## Maumwi mabyin

---

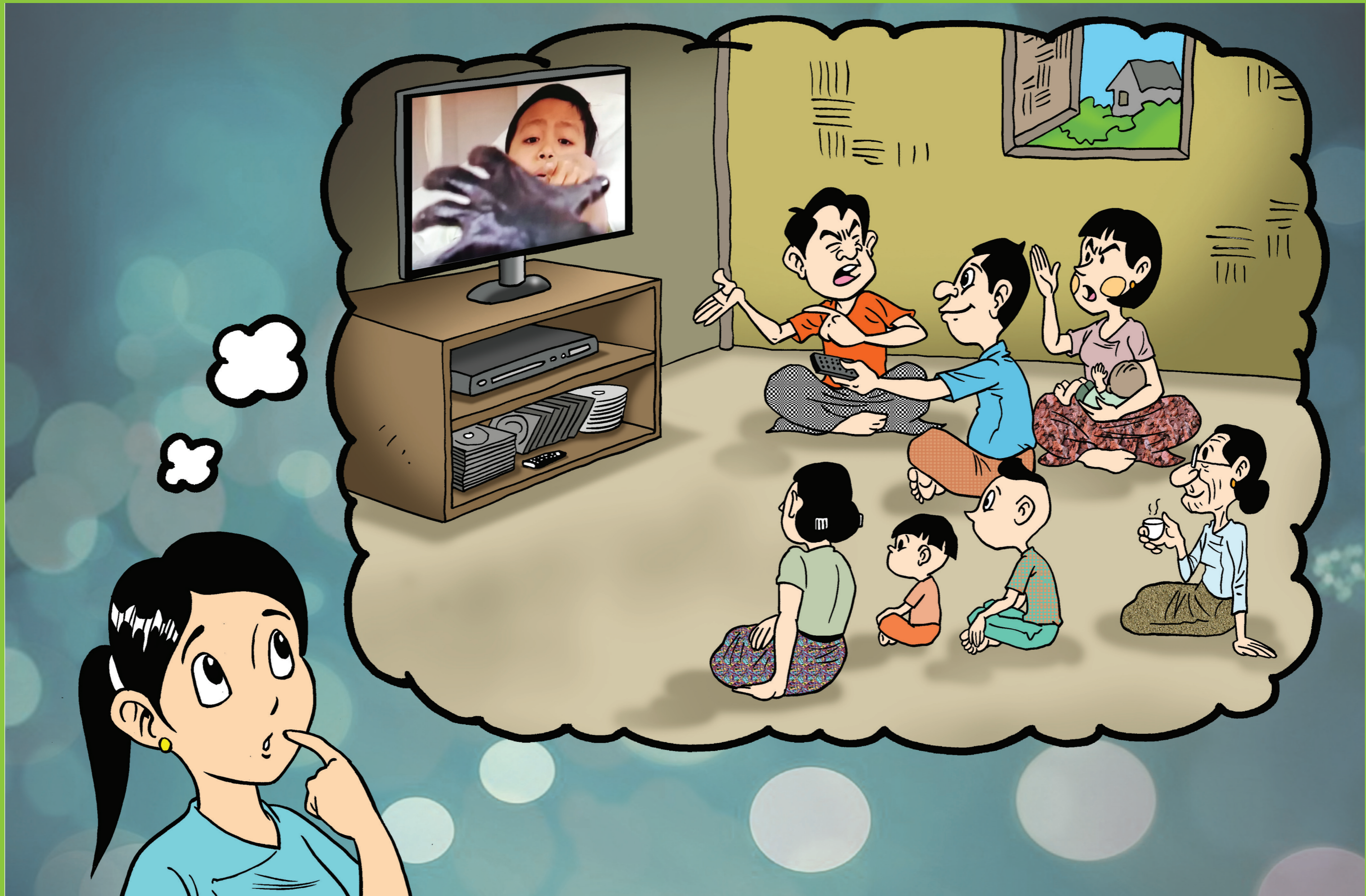
Hpo Long ndai zawn kan mase taw ai gaw ayan na byin chye ai hpan re/nre ngu ai hpe Ma San Htwe asan sha n-chye ai. Ndai zawn jahkring hkring kan mase nna, shi a kasha hkum mahtin ai lam yawm wa nna, atsawm sha n-kaba na hpe Ma San Htwe myit tsang taw ai.

## Myit ra ai hku lata mai ai jat bang da ai gasan ni.

---

- Ndai asak aprat kaw kan mase ai hpe ayan na byin chye ai lam ngu nna shadu ai kun? Hpa majaw rai? Ayan na byin chye ai lam n-re ngu hpa majaw shadu ai rai?





# 4

## Maumwi mabyin

---

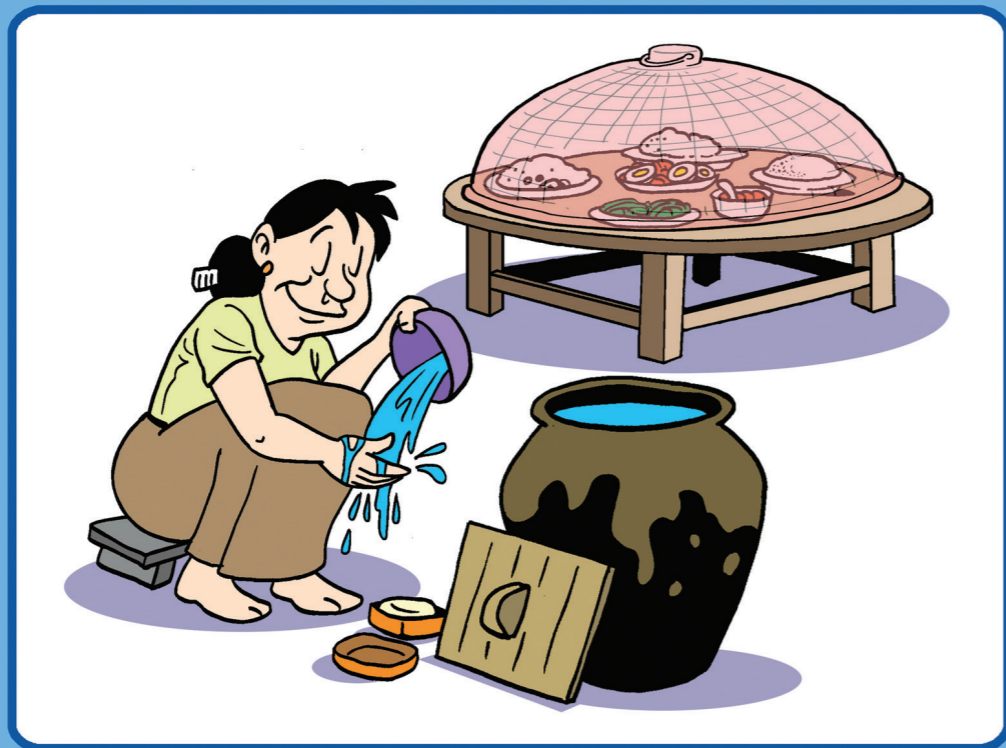
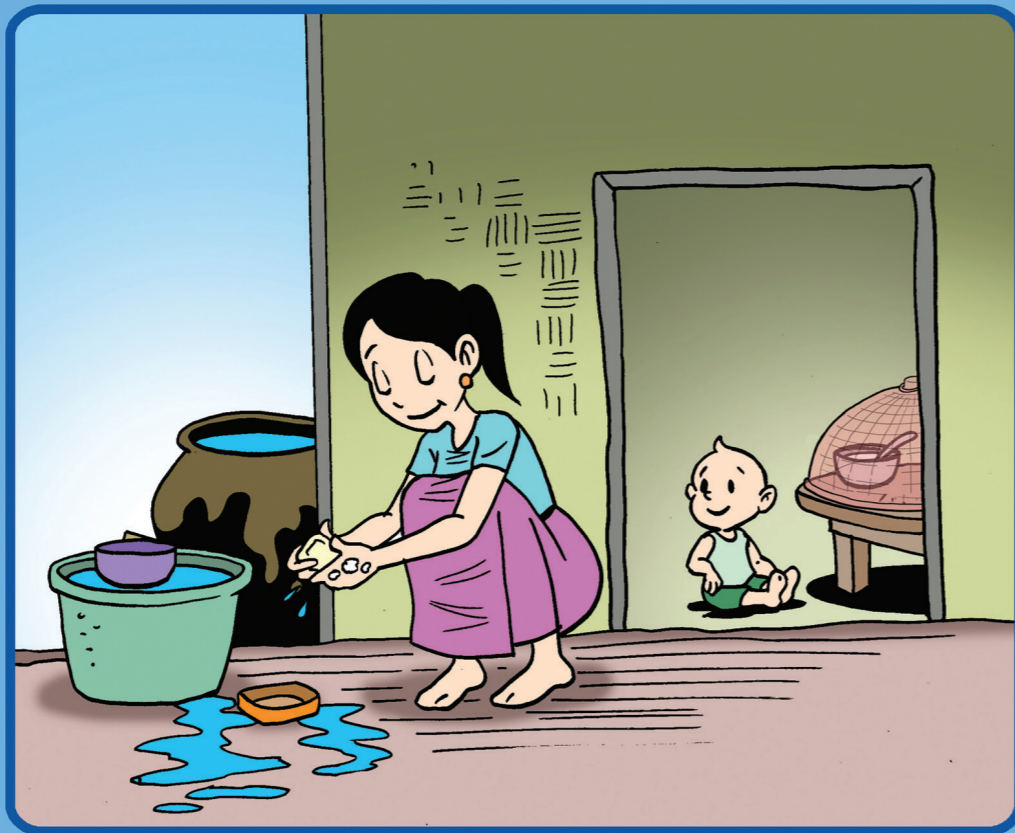
Shi sumla hkrung ni hpe yu taw ai shaloi, sumla hkrung ka-ang ram du jang, madun chye ai, masha ni ayan na shalai kau ai “Lata Kyang kaba” “Hpun Sin Nat” ndai zawn re ai hkam kaja lam hpaji jaw maumwi mabyin ni hpe dum wa ai. Dai hpaji jaw ai maumwi mabyin gadun ni hta kan n-mase na matu namdum hpe lang na matu, lu sha nsha shi yang lata hpe sabya hte kashin na matu hpaji jaw da ai.

## Myit ra ai hku lata mai ai jat bang da ai gasan ni.

---

- Na mare buga kata kaw hkumhkrang hte makau grup yin san seng ai lam, hkam kaja lam shiga ni hpe gara shara kaw nna lu ai rai?
- Video yu let, hkam kaja lam maumwi mabyin gadun ni sa wa yang, nang mung shalai kau chye ai kun? Hpa majaw rai?





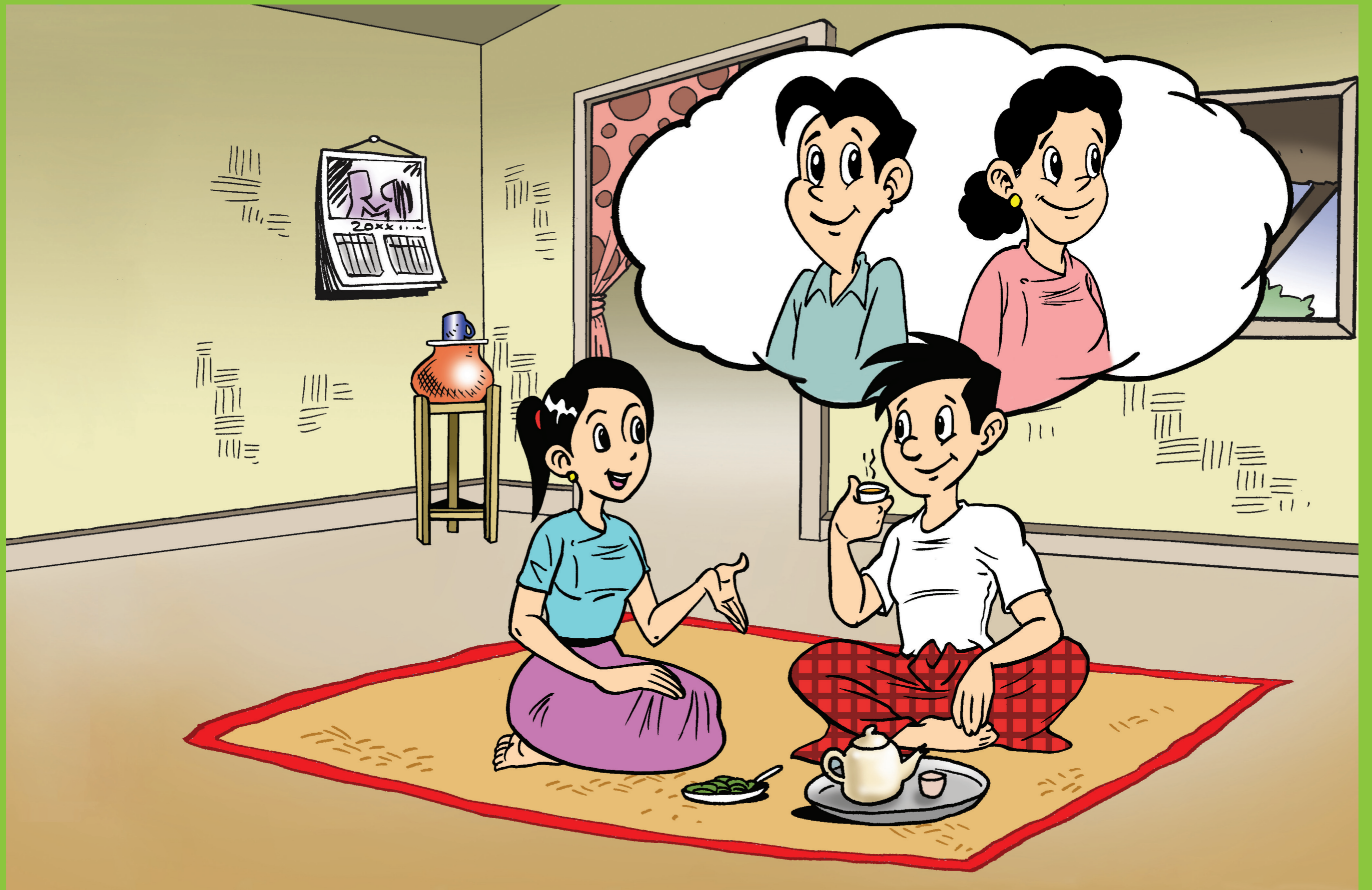


# 5

## Maumwi mabyin

---

Ma San Htwe gaw kan mase ai ana hpe makawp maga na matu, jinu shim ai namdum hpe lang ra na, lu sha n-sha shi yang lata hpe sabya hte kashin ra na, ndai zawn re ai lam ni hpe chye ngut chy-  
alu re majaw, galoi mung hkan nang hkan sa ai. Lu sha n-sha shi yang mung, ma hpe lu sha n-jaw sha shi yang mung, galoi mung lata hpe sabya hte kashin wa ai. Ko Ta Htoo mung nta masha ni yawng lu sha n-sha shi yang, lu sha n-hkyen shi yang, namdum yu ai hpang lata hpe sabya hte kashin na matu galoi mung sadi jaw ai.



# 6

## Maumwi mabyin

---

Shi a kasha kan mase ai gaw gaga lam ni naw nga na kun ngu nna sumru ung ang nga ai. Masha ni kam ai zawn sha, ma langai mi kaba wa ai shaloi hkum gawng byin nga masa galai wa ai majaw kan mase ai gaw mara byin chye ai lam re ai kun?

Shi a nta masha ni hpe lam shagu sharin ya wa ai hkai sun sara Ko Awng Myit a madu jan, Ma Tuza hpe gasan ni san mayu wa ai. Lani mi gaw Ko Awng Myit a dinghku de sa chyai nna, hpaji naw hpyi na re ngu nna, shi a madu wa hte bawngban ai.



Ndai shara hta maumwi mabyin hti ai hpe jahkring kau nna, madat taw ai ni hte rau bawngban jahta u.

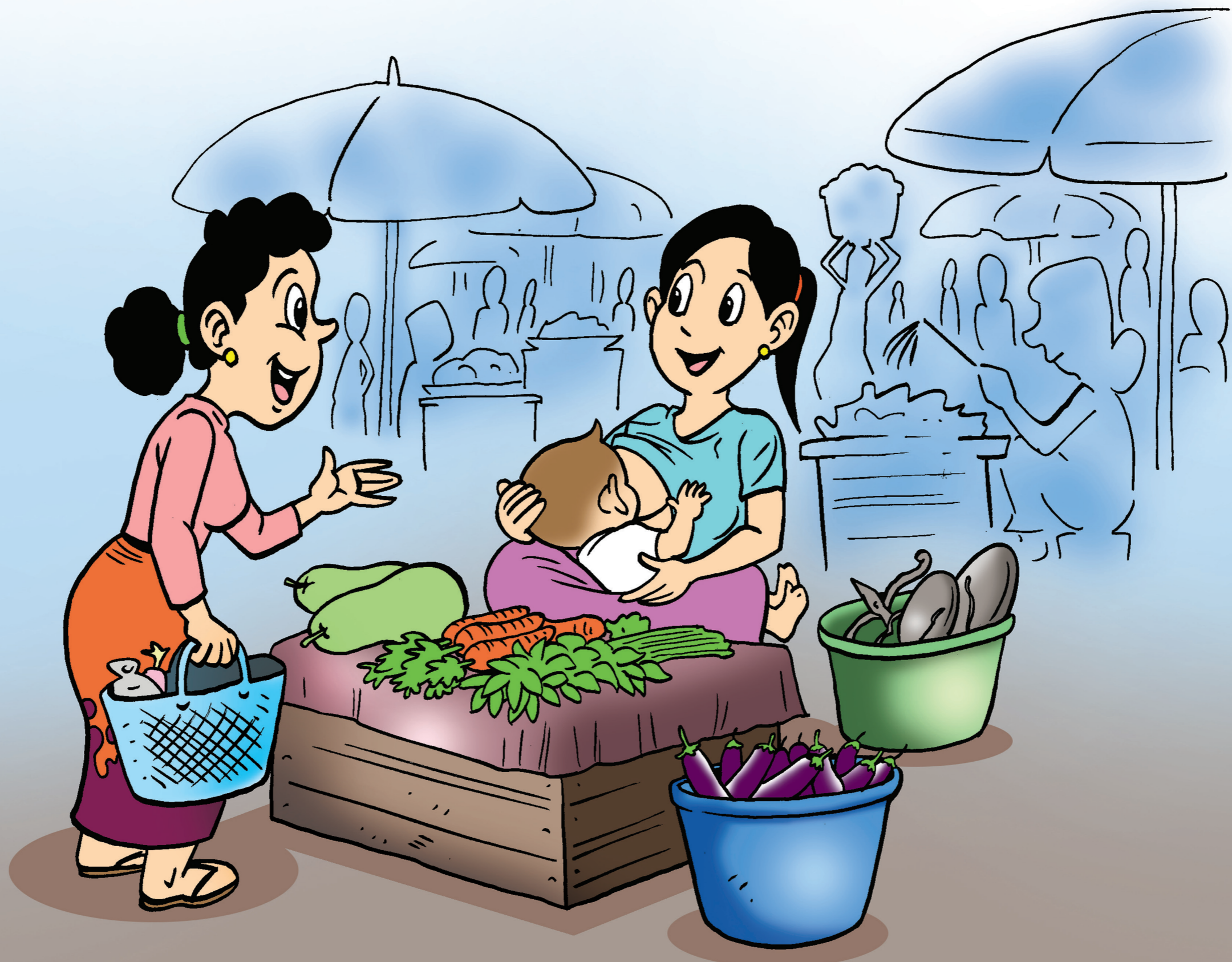
Bawngban jahta na matu aten minute 15-20 daram na na re. Bawngban jahta ngut ai hpang maumwi mabyin hpe matut hti u.

## Bawnban jahta ai lam

---

- Na mare buga kata hta mung hkum gawng byin masa galai shai ai majaw kan mase ai ngu nna tsun ma ai kun?
- Na mare buga kata kaw ma ni kan mase ai gaw gaga hpa majaw byin chye ai ngu nna tsun ma ai rai?
- Nang gaw gara hku shadu ai rai? Dai kam ai lam ni hpe myit hkum ai kun? Hpa majaw myit hkum ai rai? Hpa majaw myit n-hkum ai rai?
- Maumwi mabyin matut nna hpa naw byin na ngu shadu ai rai?





# 7

## Maumwi mabyin

---

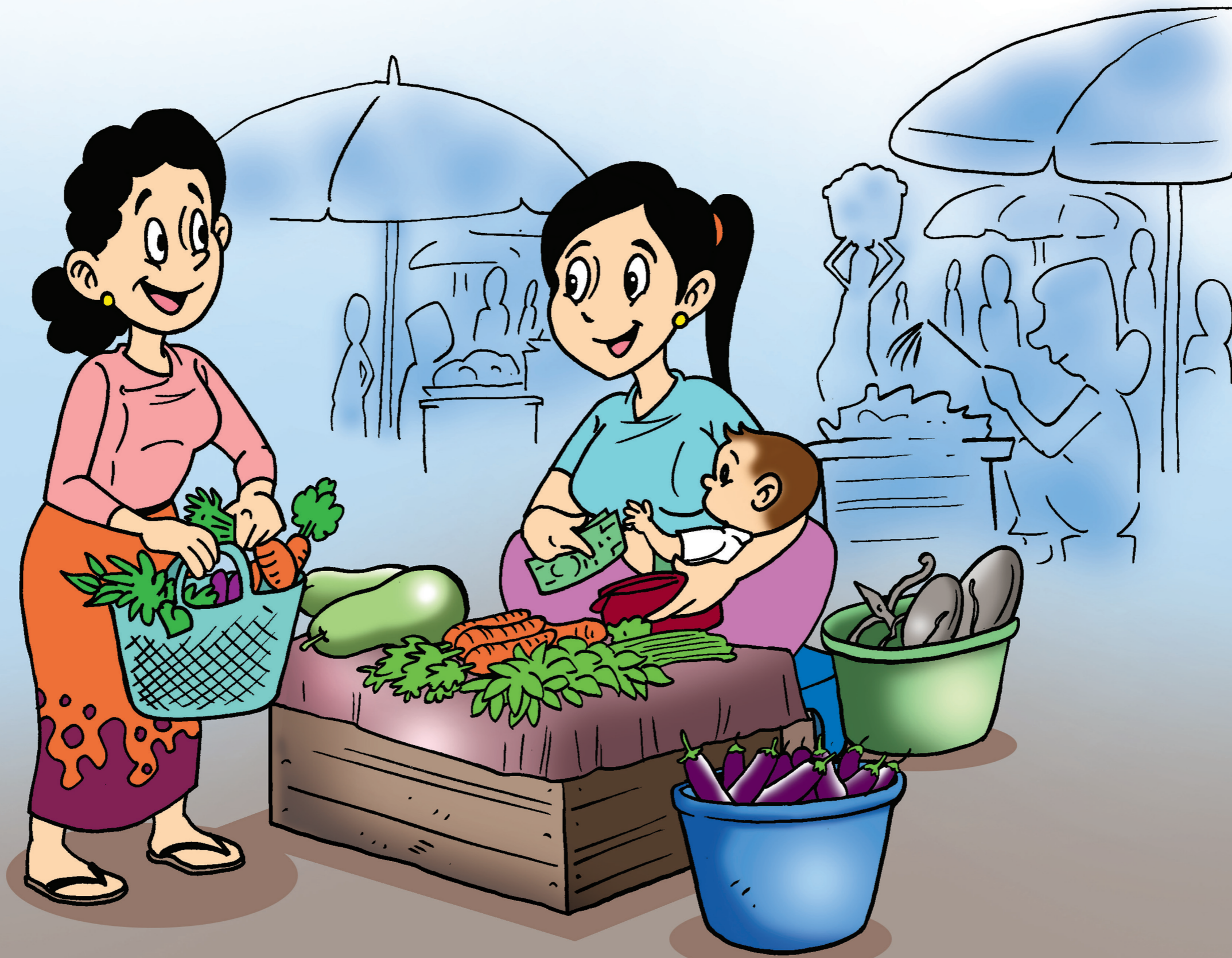
Lani mi hta mare kata na gat kaw Ma San Htwe gaw sun kaw na namlaw namlap ni hpe dut taw ai. Dai ten hta, shi a namlaw namlap ni hpe sa mari ai Ma TuZa hte hkrum ai. Ma TuZa gaw “Hkam kaja nga ai kun? Ma mung hkam hkaja nga ai kun?” ngu nna shakram ai. Ma San Htwe gaw Ma TuZa hpe “sa mari ya ai majaw chye ju kaba yaw. Hkrum mayu taw ai hte hkrak sha rai sai. Ya gaw ngai mung, ma mung hkam kaja nga ai. Hpo Long chyu atsawm lu ai. Nta masha ni a lu sha hpe mung atsawm sha sha taw sai. Rai tim, shata mi hta kalang ngu na ram kan mase ai. Hpa majaw kan mase ai kun n-chye tsun ai. Masha ni gaw hkum gawng byin masa galai shai ai majaw kan mase ai re, ayan na byin chye ai lam re ngu nna tsun ma ai” ngu nna tsun ai.

## Myit ra ai hku lata mai ai jat bang da ai gasan ni.

---

- Hpo Long kan mase taw ai gaw hpa majaw rai na kun?







# 8

## Maumwi mabyin

---

Ma Tuza gaw “Hkam kaja ai nga na lu ai majaw kabu ai. Ma kan mase ai lam hte seng nna aten la let sang lang dan mayu ai. Ma San Htwe nta masha ni rau yang, anhte nta de sa chyai rit le, shingnam gayau hte hpahka hte daw jaw mayu ai” ngu nna saw shaga ai hpe na ai majaw, Ma San Htwe gaw grai chyeju dum ai hte rau saw shaga ai hpe kalang ta hkap la ai.



# 9

## Maumwi mabyin

---

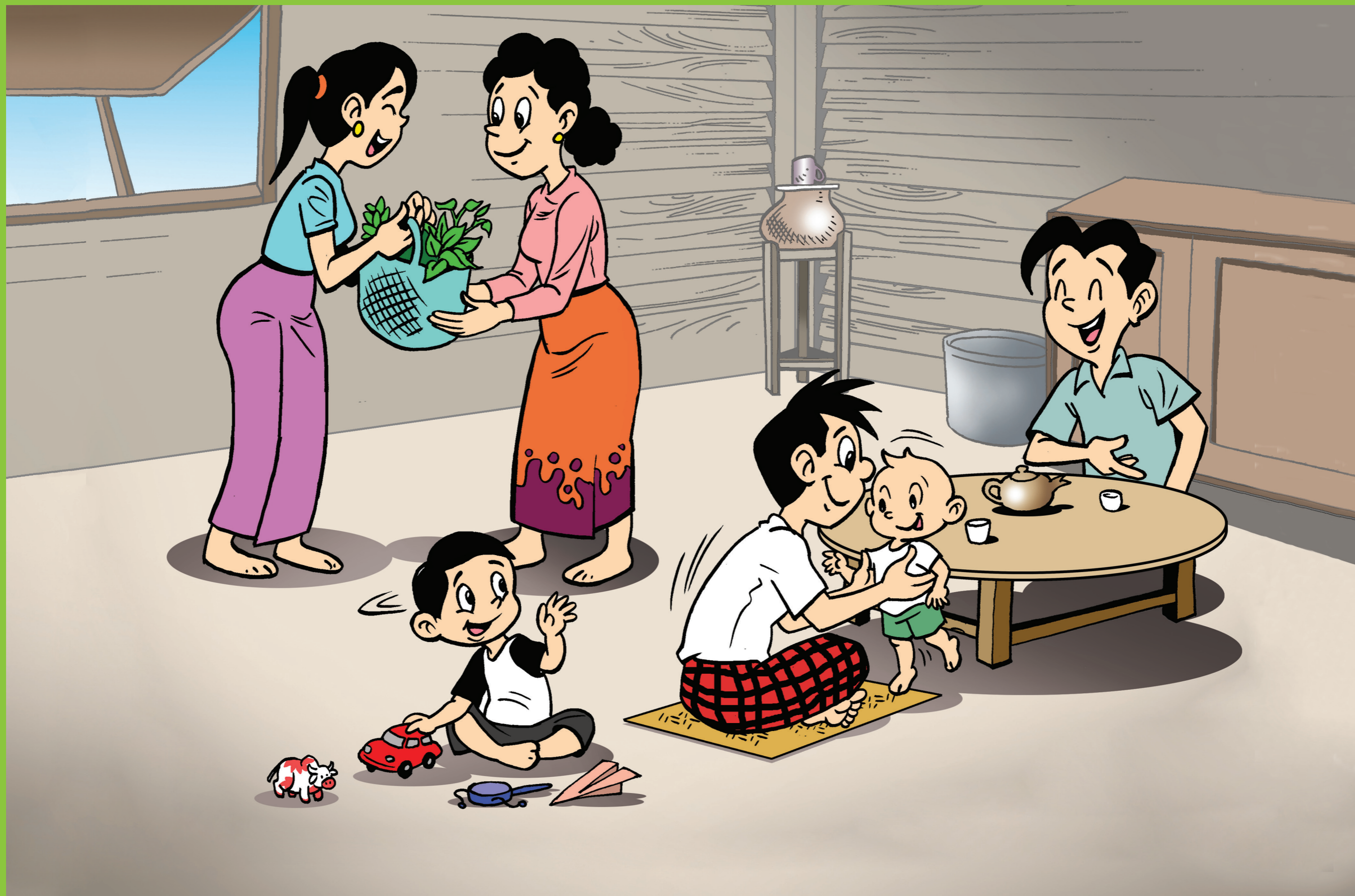
Shana de du ai shaloi, Ma San Htwe ma, Ko Ta Htoo ma Hpo Long hpe pawn nna, Ma TuZa ni a nta de sa chyai ai. Ma Tuza ni a sun wang kata de shang wa ai shaloi, sun wang ting san seng nna maza ni mung n-nga ai hpe mu hkrup ai. Sun wang jut kaw mung magap lawm ai maza tawng langai naw nga ai. Nta a makau grup yin yawng shi shara hte shi san san seng seng byin taw ai hpe yu nna, shan la lahkawng mau ai hte yu ra ma ai. Shan yan a sun wang chyawm gaw ndai daram n san seng a-hka ngu nna myit hkrup ma ai.

## Myit ra ai hku lata mai ai jat bang da ai gasan ni.

---

- Na nta a makau grup yin gaw gade daram san seng ai kun?





# 10

Maumwi mabyin

---

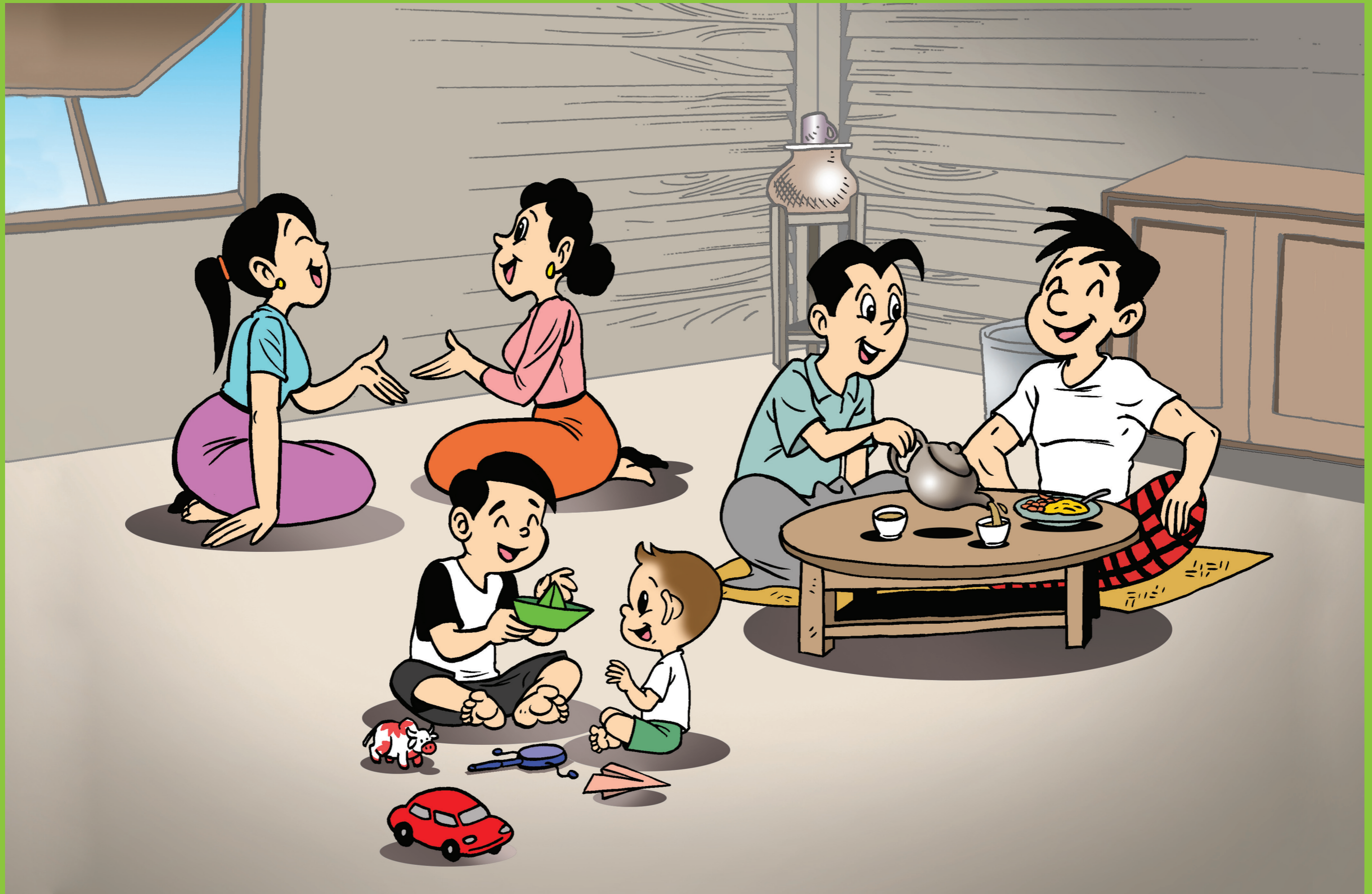
Ko Awng Myit hte Ma Tuza gaw Ma San Htwe nta masha ni hpe kabu kara hkaptau la ma ai. Ma San Htwe gaw Ma TuZa hpe shi sun a namlaw namlap ni hpe kumhpa jaw ai shaloi, Ma TuZa gaw chyeju kaba sai lam tsun ai. “Ko Ta Htoo gaw sun wang ting grai san seng nga ai” ngu nna shakawn ai. Nta kata de shang ai shaloi mung, nta kata kaw grai san seng taw ai hpe mu hkrup ai. “Ma TuZa gaw grai ram ai nta madu jan re, nta kata kaw mung grai san seng nga ai” ngu nna Ma San Htwe shakawn ai.

Myit ra ai hku lata mai ai jat bang da ai gasan ni.

---

- Na nta gaw gade daram san seng ai kun?







# 11

## Maumwi mabyin

---

Ko Awng Myit gaw “Hpo Long mung kaba wa sai. Hkam kaja ai nrai ni” ngu nna san ai. Ma San Htwe gaw, “Ya gaw hkam kaja ai. Rai tim, kalang lang kan mase na hpe tsang ra ai. Ma TuZa na kasha kaji ai shaloi mung, ndai zawn jahkring hkring kan mase chye ai kun?” ngu nna bai san ai. Ma Tuza gaw “Ma na lu sha ni, lata ni, ginsup rai ni, ginsup ai shara ni hpe galoi mung san seng hkra galaw wa ai majaw, ma gaw kan nau n-mase ai” ngu nna bai tsun dan ai.

Ma San Htwe gaw “Ngai mung ma na lu sha hpe san seng myit kam mai hkra galoi mung sadi wa ai. Shi hpe lu sha n-jaw sha shi yang galoi mung lata hpe sabya hte kashin ai. Ndai ram sadi nga ai lapran kaw na hpa majaw kan mase ai kun n-chye tsun sai. Nye moi mung, gaga masha ni mung tsun ma ai gaw, ma gaw hkum gawng byin masa galai shagu kan mase chye ai da. Ndai hku byin ai gaw mara byin ai hpan re/n-re hpe chye mayu ai majaw, Ma TuZa ni hpang de hpaji sa hpyi ai re” ngu bai tsun ai.



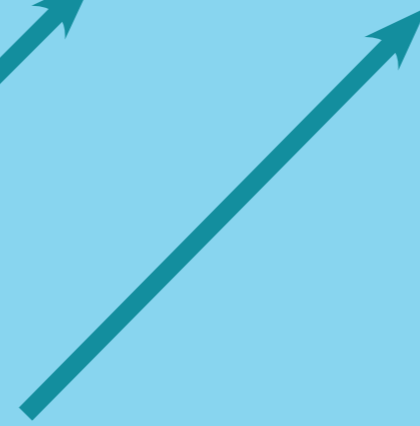
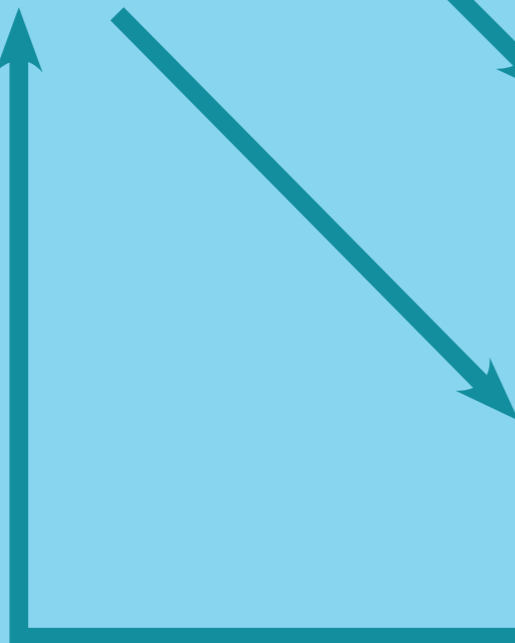
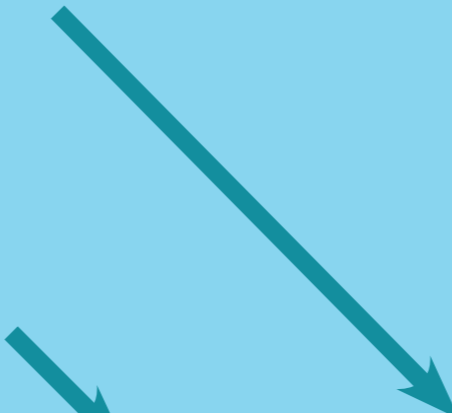
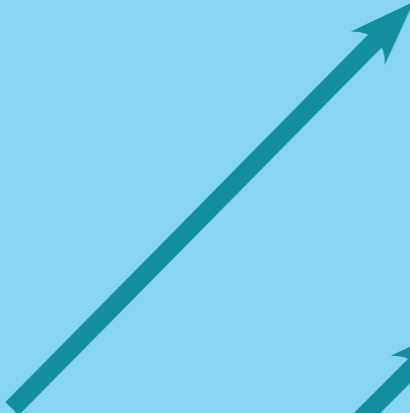
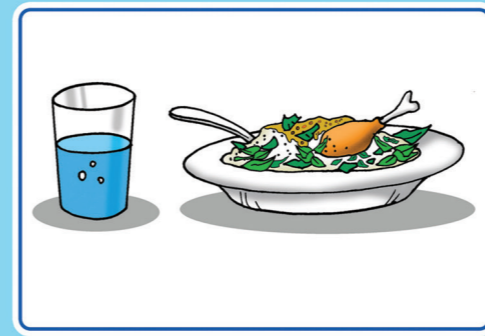
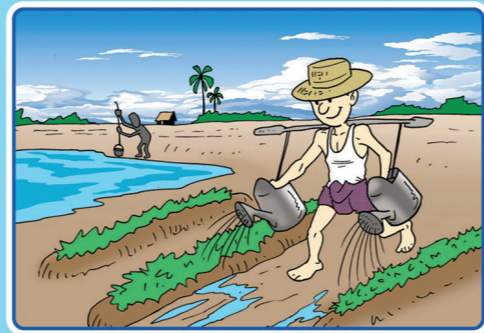
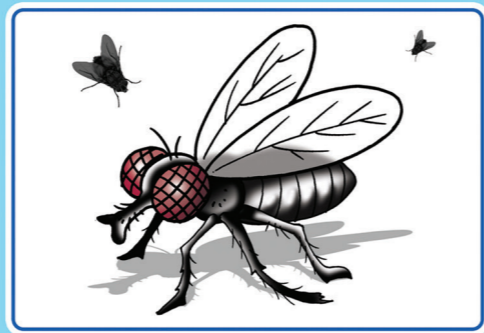
# 12

## Maumwi mabyin

---

Ko Awng Myity mung “Kan mase ai gaw mara byin chye ai lam gaw nre. Lama ma a majaw re. Ndai hku di ga. Hpo Long hpa majaw kan mase ai hpe chye lu na matu, game langai ginsup ga” ngu nna tang shawn ai shaloi, yawng gaw ginsup na matu myit hkrum ma ai. Ko Awng Myit gaw gawk kata kaw na sumla htuk mi la pru wa nna, jahtai ntsa kaw mara da ai. Ndai sumla ni hpe ashawng ahpang ren di nna shara jahkrat ra ai ngu sanglang dan ai.





# 13

## Maumwi mabyin

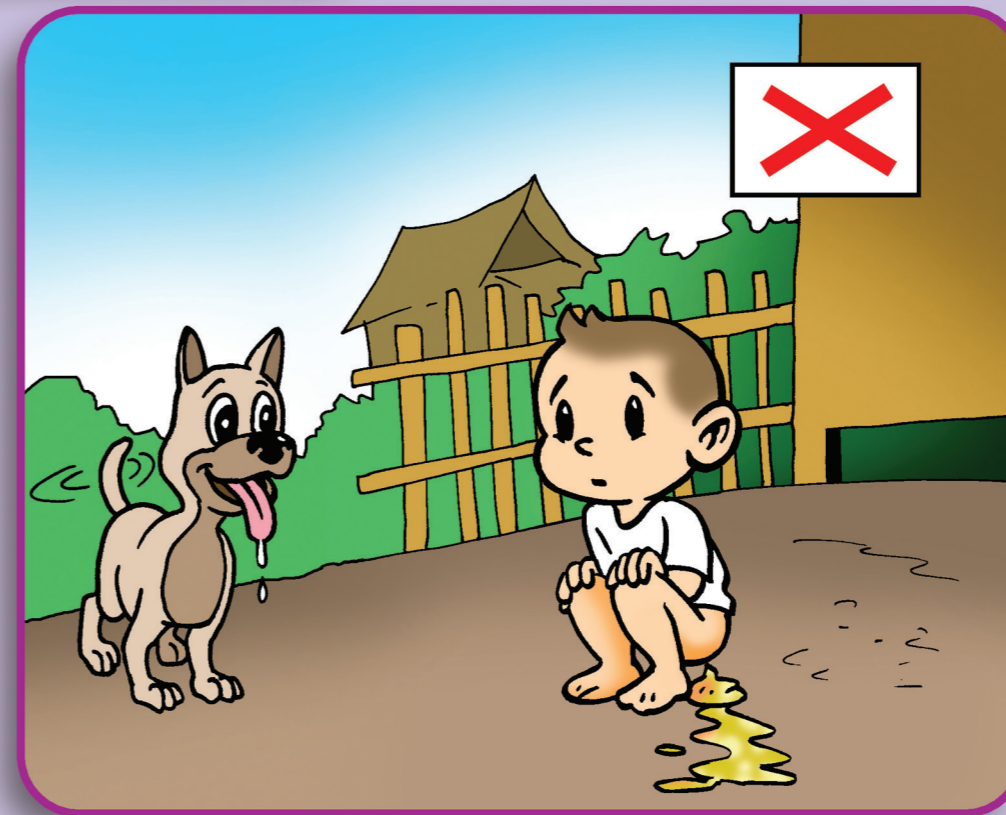
---

Sumla ni gaw nsan seng ai lam amyuu myu kaw nna, ma langai kan mase nna, lu sha n-gun ra gadawn wa ai du hkra gara hku tsang hte tsang matut mahkai taw nga ai ngu ai hpe madun da ai sumla ni re. Shanhte ni yawng arau rau jawm bawng yu nna, sumla ni hpe shi shara hte shi shara jahkrat ma ai. Hpang jahtum gaw sumla ni hpe ashawng ahpang hkra jaw hkra shara jahkrat ngut sai. Ko Awng Myit gaw “ma langai a shatban de n-san seng ai lu sha du mat mai ai lam masa gade ram nga ai rai?” ngu san ai. Ko Ta Htoo gaw lam (5) nga ai. N-san seng ai lata, jinu, hkau na pa, hkyi ni hte ntsin ni re” ngu nna bai htai ai. Ko Ta Htoo gaw “Dai rai yang gara lam gaw Hpo Long hpe kan mase sha-ngun ai lam mai byin na kun?” ngu bai san ai.

## Myit ra ai hku lata mai ai jat bang da ai gasan ni.

---

- Gara lam gaw Hpo Long kan mase ai lam ginjang rai na kun?





# 14

## Maumwi mabyin

---

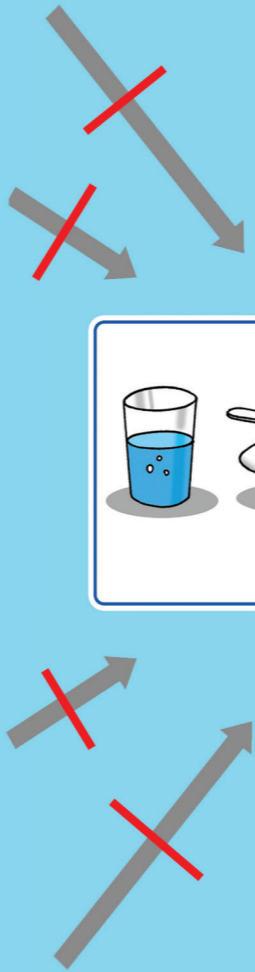
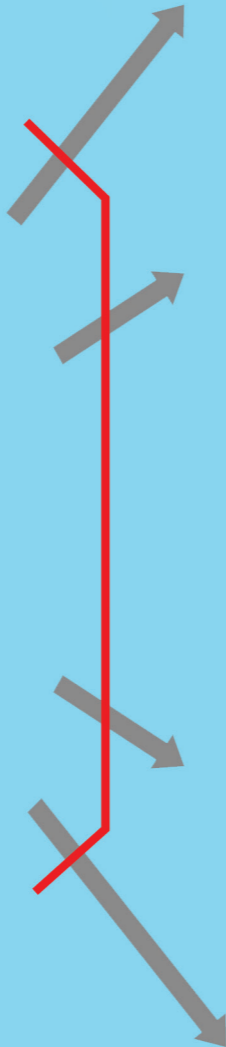
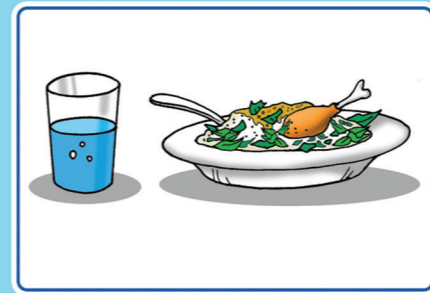
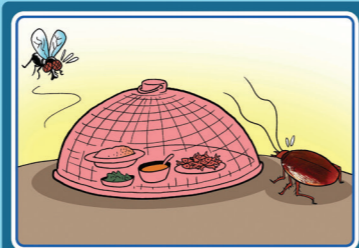
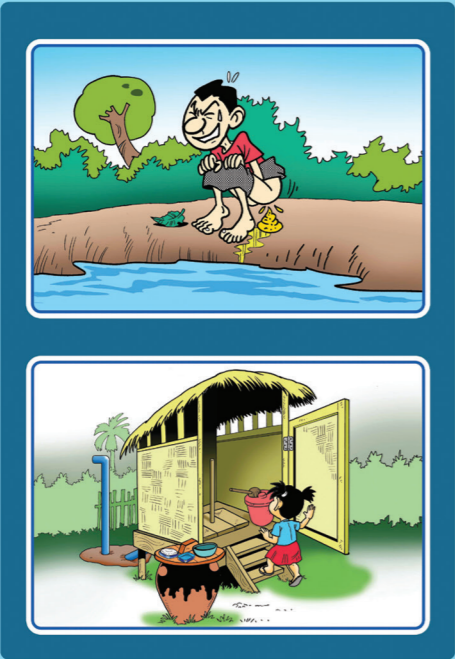
Ma San Htwe gaw “Ma a lu sha ni hpe jinu a hpyen kaw nna mung makawp maga wa ai. Nta kaw mung jinu shim ai namdum hpe, hka pru ai shara hte pe 50 jan gang nna galaw lang ai. Namlaw namlap ni hpe mung hka san san hte galoi mung kashin ai. Ma a matu lu sha ni hpe galoi mung myit kam mai hkra hkyen lajang ai” ngu bai tsun ai.

Ko Awng Myit gaw “ Ma a hkyi hpe gaw gara hku gabai ai kun?” ngu san ai shaloi Ma San Htwe gaw “Ma gaw shi labu kaw sha kan sa ai. Ngut jang she labu palawng hkrut hka shin ai shara kaw labu hpe hkrut kau ai. Ma gaw namdum n-chye dung shi ai. Kalang lang nta shawng na ga ntsa kaw kan sa nna, gwi ni sha mat ai.” ngu nna tsun ai. Ko Awng Myit gaw “ndai ni gaw ma kan mase ai a ginjang ni mai byin ai.” ngu htawng madu dan nna, ma a lu sha ni hpe n-san seng hkra byin sha-ngun ai dai ginjang ni a lam hpe sanglang dan ai.

## Myit ra ai hku lata mai ai jat bang da ai gasan ni.

---

- Na mare buga kaw masha ni jinu a hpyen kaw nna gara hku makawp maga ma ai rai?
- Na mare buga kaw gara hpan namdum ni hpe lang ai rai?
- Na mare buga kaw lu hka, lang ai hka, hkashin hka ni hpe gara shara kaw nna lu ai rai?
- Na mare buga kaw ma ni a hkyi hpe gara shara kaw gabai ma ai rai?
- Ma ni gaw shanhte a n-gup de numhpu ni, maza ni hpe bang chye ma ai kun?



# 15

## Maumwi mabyin

---

Ko Awng Myit gaw Ka Ta Htoo nta masha ni gaw jinu, hkauna pa hte ntsin ni kaw nna, lusha n-san seng hkra byin sha-ngun ai ginjang ni hpe hkrak makawp maga da lu ai ngu nna shakawn ai. Rai tim, hkyi hte lata kaw nna lu sha n-san seng ai lam byin sha-ngun ai lam ni hte seng nna makawp maga na matu matut galaw lu na ni naw nga ai ngu nna tsun ai.

Ginsup ai lam tsang 2 hku nna, lu sha n-san seng sha-ngun ai lam ginjang ni hpe makawp maga ai gaga sumla kasha ni hpe Ko Awng Myit gaw bai garan ya ai. Ma San Htwe hte Ko Ta Htoo ni gaw makawp maga ai sumla ni hpe aloi sha shara jaw hkra jahkrat dat ai.





# 16

## Maumwi mabyin

---

Ma TuZa gaw shi a la kasha hpe, ma namdum kaw k kaw chye dung hkra shaman ya nna, dai ma namdum kaw kata na hkyi ni hpe namdung hku kata de gabai kau ai lam hpe sanglang dan ai. Ma a hkyi hpe ga ntsa kaw dai hku sha tawn da ai rai yang, rai hkrut, hka shin ai shara kaw kashin gabai ai rai yang, ma gaw ga ntsa kaw ginsup ai shaloi (sh) ga ntsa kaw na hkyi ni gaw lagaw kaw kap wa nna nta ntsa de du mat ai shaloi, (sh) marang htu ai shaloi, lam lama ma hku nna ma kaw bai du wa chye ai.

Dai majaw, grai ginsup ai ma a matu san seng nna hkam kaja lam hte htap htuk ai makau grup yin byin hkra nta wang hte nta hpe galoi mung a san sha re hkrak sadi nna tawn da ai re ngu nna Ko Aung Myit gaw sanglang dan ai.

Ko Ta Htoo gaw Hpo Long a matu mung, ma namdum kaw langai mari nna dai ntsa kaw Hpo Long namdum chye sa hkra shaman ya na matu myit manaw lu mat nna, shanhte a nta sun wang hte nta hpe Ko Awng Myit a nta zawn sha galoi mung san san seng seng da na matu myit dawdan ai.

## Myit ra ai hku lata mai ai jat bang da ai gasan ni.

---

- Na mare buga na ndai asak pang kaw na ma ni gaw gara shara ni kaw ginsup ma ai rai?
- Ma ginsup ai shara ni gaw hpa majaw san seng ra ai rai?
- Ma a lusha n-gun hte makau grup yin san seng ai lam gaw gara hku matut mahkai nga ai rai?







# 17

## Maumwi mabyin

---

Ma Tuza gaw shi a kasha hpe lu sha n-jaw sha shi yang, ma a lata hpe mung sabya hte kashin ya ai. Hpa majaw nga yang, ma gaw shi lata hte shi lu sha ni hpe jum nna, n-gup kata de bang chye ai majaw re ai ngu nna sanglang dan ai. Ma San Htwe chyawm gaw kanu nan jaw sha ai lu sha ni a matu gaw nra ai ngu shadu ai majaw, Hpo Long a lata hpe lu sha n-sha shi yang galoi mung n-kashi ya wa ai lam hpe yin la ai. Ya gaw Hpo Long kasha hpa majaw jahkring hkring kan mase chye ai ngu ai hpe shi chye wa sai.

## Myit ra ai hku lata mai ai jat bang da ai gasan ni.

---

- Lu sha n-jaw sha shi yang, ma a lata hpe sabya hte kashin ai kun?
- Ma hpe masha langai ngai gaw lu sha bawt jaw ai shaloi, ma a lata hpe sabya hte kashi ra ai ngu shadu ai kun? Hpa majaw rai? N-ra ai ngu shadu yang hpa majaw rai?
- Na ma a lata hpe sabya hte kashi ya ai hpang jahtum atem gaw galoi kun?
- Ma hpe yu lakawn ai wa langai hku nna, ma hpe sha n-jaw sha shi yang, ma a lata hpe kashin na matu hpa mayak ni nga ai kun?







# 18

## Maumwi mabyin

---

Nta de wa ai shaloi, Ko Ta Htoo hte Ma San Htwe ni gaw Daw Taung Kyi hpe bai sanglang dan na matu, n-san seng ai hpe madun ai sumla pa ni hpe shap wa ai. Mare kata kaw na gat seng langai a shawng kaw du ai shaloi, Hpo Long a matu sumla lawm ai namdum kaw kasha hpe mari dat ai. Hpo Long gaw shi a matu ginsup hpa nnan langai lu ai zawn pyaw taw ai.

## Myit ra ai hku lata mai ai jat bang da ai gasan ni.

---

- Na mare buga kata kaw ma namdum kaw mari mai ai kun?
- Ma namdum kaw hpe na mare buga kata kaw n mai lu ai rai yang, gaga hpa lam ni naw nga na kun?
- Ma yu gawn lajang ai wa langai hku nna, ma a hkyi hpe ladat hte hkrak atsawm sha gabai na matu hpa mayak ni nga ai kun?





# 19

## Maumwi mabyin

---

Ka Ta Htoo yan la gaw shanhte sharin chye la wa ai lam ni hpe Daw Taung Chyi hpe bai tsun dan na matu, ma hpe ma namdum kaw ntsa kaw dung sha-ngun nna, namdum chye sa hkra shaman ya na matu, ma namdum kaw kata kaw na hkyi ni hpe namdum de ladat hte hkra atsawm sha gabai na matu, ma hpe lu sha n-jaw sha shi yang galoi mung a dum sha rai nna, ma a lata hpe sabya hte kashin ya na matu myit rawt let dawdan ma ai.



Maumwi mabyin daw (3) ngut sai. Shanglawm ai ni hte bawngban jahta u. Bawngban jahta na matu minute 15-20 daram na na re.

## Bawngban na lam

---

- Na mare buga kata kaw lu hka, lang na hka ni hpe gara kaw nna lu ai rai?
- Na mare buga kata kaw hpa namdum amyu hpan hpe lang ma ai rai?
- Na mare buga kaw ma ni a hkyi hpe gara hku gabai ma ai rai?
- Lu sha nsha shi yang, ma a lata hpe sabya hte kashin ai kun? Hpa majaw rai?
- Ma langai hpe jaw ai, lu sha amyu hpan hte shadawn sharam hpe jaw sha ai hte lu sha n-gun ra gadawn ai lam hpe makawp maga lu na ngu shadu ai kun? Hpa majaw rai?
- Makau grupyin san seng ai hte ma a lu sha n-gun matut mah kai ai lam nga ai kun? Gara hku matut mahkai nga ai rai? Ndai maumwi mabyin gaw tatut kaw kaja mai byin ai kun? Ndai zawn re ai mabyin ni na mare buga kaw byin wa chye ai ngu shadu ai kun?





Madat ai ni hpe maumwi mabyin dingyang hta na wa chye wa ai lam ni yawng hpe bai dinglik yu sha-ngun u.

## Dinglik yu ai lam

- Madat taw ai ni hpe marai 4-5 hpe uhpung mi, uhpung kasha ni garan hpawng u. Maumwi mabyin dingyang hta na wa chye wa ai myit shangsha na zawn re ai ahkyak ai lakjet ni a lam hpe uhpung kaji ni hta bawngban jahta sha-ngun u. Minute kachyi mi bawngban ngut ai hpang, uhpung kaji kata hta bawngban wa ai lakjet lahkawng hpra hpe gaga uhpung ni de bai garan kachyan ra na re ngu nna tsun u.
- Uhpung kaji ni gaw tinang bawngban wa ai lakjet ni hpe bai garan kachyan taw ai shaloi hta, garan kachyan nga ai lam ni hpe laika maisau pa ntsa hta madi shadaw ya ai wa gaw hkan ka da u. Uhpung kaji langai hte langai tsun ai lam 2 gaw, gasi n-bung ai rai tim, lachyum bung taw jang, lakjet langai hku nna pawng ka u.
- Uhpung shagu kaw nna, garan kachyan ngut ai hpang madi shadaw ai wa gaw lawu na gasan ni hpe san nna yawng hpe shanglawm bawngban jahta sha-ngun u. Hpa gasan ni naw san mayu ai kun? Tsun mat wa ai kaw ahkyak ai lakjet ni law ai kun?
- Bawngban tsun jahta ai lam ngut ai hpang, gara lakjet gaw tinang a matu (sh) tinang dinghku hpe karum ya na matu anhte ni langai hkrai hku nna hpa lu galaw ya na rai ngu nna san u. Ga shaga na manang langai hpe tam nna, tinang yaw shada da ai lam yawm htum langai a lam hpe garan

kachyan u. Dai ngut ai hpang, tinang a ga shaga na manang gaw shi myit da ai lam ni hpe tinang hpe bai garan kachyan sha-ngun u ngu nna tsun u.

Hka, makau grup yin hte hkumhkrang san seng ai hte seng ai shiga madung

1. Lata n-san seng ai lam hpe makawp maga na matu ahkyak ai aten ni kaw lata hpe sabya hte kashin u. Lu sha n-jaw sha shi yang, n-san seng ai arai ni hte hkra ngut shagu, ma a lata hpe kashin ya na matu hkum malap. Namdum makau hte shat sha gawk makau kaw lata shin na matu hka hte sabya hpe loi loi lu la na matu tawn da u.
  - Lu sha n-hkyen shi yang, n-shadu shi yang, na lata hpe sapbya hte kashin u.
  - Lu sha n-sha shi yang na ta hpe sabya hte kashin u.
  - Ma hpe (chyu jaw ai lam mung lawm ai) lu sha n-jaw shi yang, ma a lata hpe sapbya hte kashin u.
  - Ma a maidang hpe kashin ngut shagu na a lata hpe sab ya hte kashin u.
  - Namdum yu (sh) maza mala ni hpe lang ngut shagu hta na lata hpe sapbya hte kashin u.
2. Shimlum nna myit kam mai ai lu sha lu la na matu lawu na lam ni hpe hkan nang hkan sa u.
  - Lu sha hpe jum ai hkyen ai makau grup yin hpe san san seng seng galaw u. (Lata kashin ai lam, madung hkra ai ntsa na man pa ni hte, lang ai arung rai ni hpe san seng sha-ngun ai lam, lu sha hkyen ai shara ni hpe myi hte nmu lu ai grai kaji ai hkrung kanu, dusat ni nshang na matu makawp maga ai lam ni lawm ai.)



- San seng nna myit kam mai ai hka hpe lang u.
  - N-shadu shi ai lu sha katsing ni hpe shadu ngut sai lu sha ni hte san san garan da u.
  - Lu sha ni hpe atsawm hkut hkra shadu u.
  - Lu sha ni hpe myit kam mai ai shara kaw kyem da u.
3. Makau grup yin kaw nga ai hkyi ni hte gaga maza mala ni hpe ma ni sha hkrup chye ai ahkaw ahkang shayawm na matu, lawu na lam ni hpe hkan nang ai hte makau grup yin san seng ai lam hpe sharawt u.
- Lu sha hkyen ai shara, ma ni hpe lu sha jaw sha ai shara, ma ni ginsup ai shara ni hte, hka rudi nga ai shara ni de dusat ni n-shang lu na matu pat shingdang u.
  - Nta sun wang kata na dusat hkyi, ma hkyi ni hpe shani shagu man man jasan jaseng u.
  - Lu sha ni hpe magap ai lam, hka lwi ai lam hpe kaja shangun ai lam, maza ni hpe maza pung (sh) kum da ai nhkun kata de ladat hte hkrak gabai ai lam ni hte jigrawng, jinu, shalip, yu ndai zawn re ai ana zinlin gun hkawm ai dusat ni a hpyen kaw nna makawp maga u.
  - Madung hkra taw ai ntsa man pa ni.  
Gashadawn – namdum, lata shin shara pyinra.
  - Shatgawk pyin ra ni hpe sabya, sabya muk, hka ni hte kashin jasan jaseng u.
  - Man man jasan jaseng lu nna myit kam mai na shara ni kaw, ma ni hpe ginsup sha-ngun u.
4. Nta masha ni hte mare buga makau grup yin san seng lam a matu lawu na lam ni hpe hkan nang hkan sa u.

- Hkam kaja lam hte htap htuk ai namdum ni hpe masha shagu lang u.
  - Hkyi hpe shimlum myit kam mai ai ladat ni hte atsawm sha gabai nna jasan jaseng u.
  - Ma a hkyi ni hpe namdum kata de ladat hte hkrak atsawm sha gabai u.
5. Ma kaji ni hte lam hkawm hpang ai ma kaji ni a matu, makau grupyin san seng na matu lawu na lam ni hpe hkan sa u.
- Hkyi hpe namdum de ladat hte hkrak myit kam ra na hku gabai nna, ma jit hkam ai arai ni hpe shimlum myit kam ra na hku kashin u.
  - Namdum kata de hkyi hpe ladat hte hkrak gabai lu na matu ma jit kaw, hkyi kaw ni hpe lang u.
  - Ma lung na matu loi ai hkrak ram ai namdum hpe gin shalat u.
6. Hka madi shadaw ai ladat masa rawtjat hkrak kaja na matu lawu de na lam ni hpe hkan san u.
- Hka hkawng la ai ladat masa ni hpe rawt jat kaja sha-ngun na matu shachyaw shakap u.  
Gashadaw: Hka ting rat ladat, hka ting rat baw, makawp maga da ai hka htung ni, makawp maga da ai hka shi hte marang hka ni.
  - Hka hpe lang ai shara du hkra shim lum myit kam mai ai hku ja la hpai la u.
  - Hka jen ai lam, grai kaji ai hkrung kanu ni hpe sat ai lam ni galaw u.
  - Hka hpe shimlum ai hte myit kam mai ai hku kyem zing mahkawng da nna lang u.

Htuk shabra ai wa

---



Madi shadaw ai ni

---

